

AgileCycler™ Color Touch Thermal Cycler

AgileCycler features a truly intuitive user interface with a colored touch screen. Precision is enhanced by a 4-zone temperature regulation that corrects for any differences between the 4 peltier elements. AgileCycler can utilize a USB network to control up to 30 completely independent cycler blocks for higher throughput or multi-user situations.



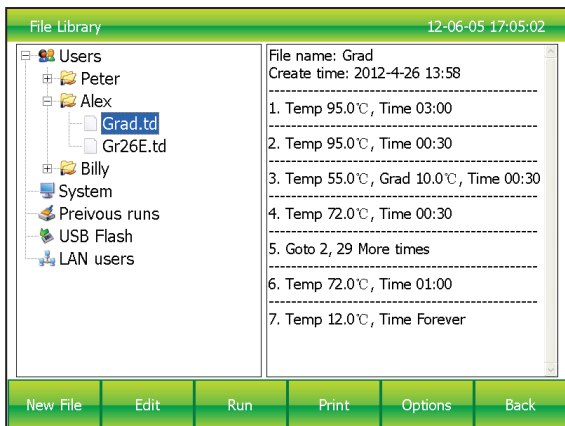
Features :

- Each thermal block has 4 independent temperature control sensors and 8 peltier heating units to ensure accurate and uniform temperature across block surface, and provide users for replicate previous condition set-up.
- 8" TFT color touch-screen with graphical display provides easy use for setting up and monitoring.
- The actual and target temperatures can be viewed and displayed graphically in real time.
- 30 thermal cyclers can be simultaneously linked to one PC via LAN, which eliminates troubles of setting up and programming each thermal cycler.
- Max. temperature gradient 30°C .
- Applicable with the following 0.2ml tube models: non-skirted, semi and fully skirted plated.
- Compatible with devices such as Mouse and Keyboard and capable to transfer data and perform software updates via USB Drive.

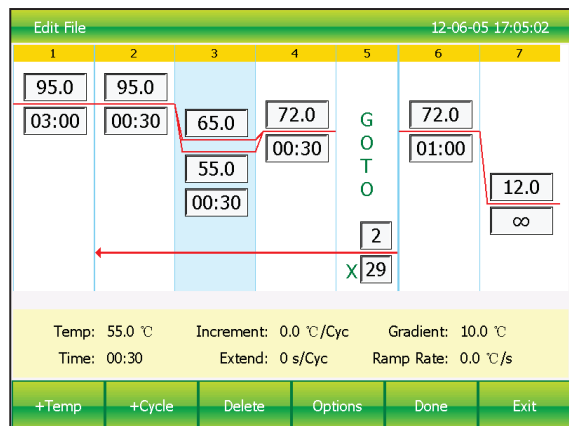
Interchangeable Block

Gradient	60-Well	Dual 48/48	Dual 48/30	384-Well
96x0.2ml gradient	60 x 0.5 ml tubes	2 x 48 x 0.2 ml tubes	48 x 0.2 ml + 30 x 0.5 ml tubes	1x 384-well PCR microplate

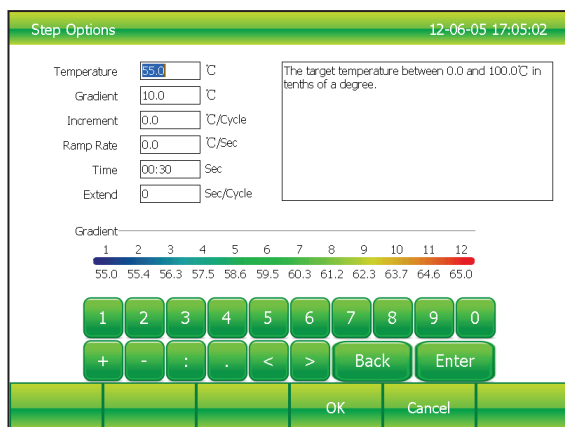
User interface of AgileCycler™



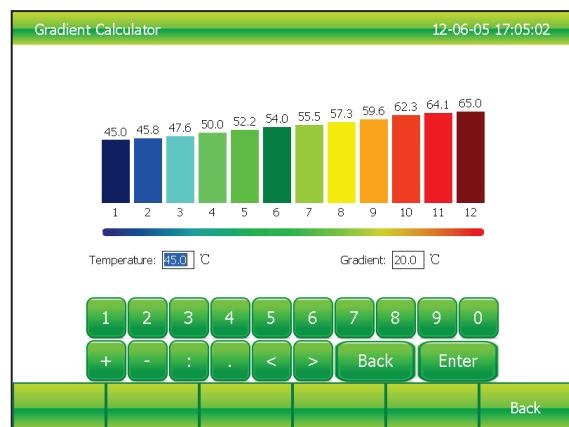
File Library keeps your files organized.



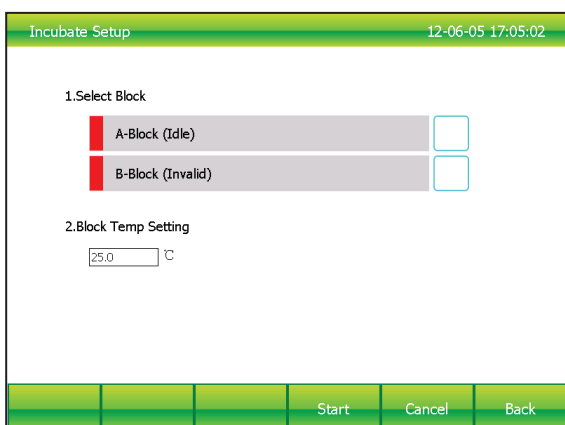
Create a new protocol in just seconds.
The file editor displays the thermal profile in an intuitive, graphical format.



Set the gradient
The message window shows the description and range of each parameter.



Tool – Gradient Calculator
After entering the block target temperature and gradient range, the temperature value for each column is shown.



Unlimited period incubating.
Incubation function maintains steady block temperature for unlimited period.

Specifications of AgileCycler™

Cat. No.	AC-96H	Auto-start on power failure	Yes
Sample Capacity	96x0.2ml	Connection to PC control software	Yes
Temp. Range	0 - 100°C	Gradient calculator	Yes
Heating Rate	4°C/s	Password protection	Yes
Cooling Rate	3°C/s	User level	Yes
Uniformity	≤ ±0.2°C	Hold at 4°C	Yes
Accuracy	≤ ±0.1°C	Printing	Yes
Display Resolution	0.1°C	Wireless blue tooth	Yes
Temperature Control	Block\Tube	LAN to computer	Yes
Ramping Rate Adjustable	0.1 - 2.5°C	LCD	8 inch, 800x600 pixels, TFT
Gradient Uniformity	≤±0.2°C	Real time temperature sensor feedback	Yes
Gradient Accuracy	≤±0.2°C	Communication	USB2.0 , LAN
Gradient Temp. Range	30 - 100°C	Noise emission	Very low
Gradient Span	1 - 30°C between 30 - 99.9°C	Dimensions	38 x 24 x 26 cm (LxWxH)
Hot Lid Temperature	30 - 110°C	Weight	8.5Kg
Over-temperature cut-out	Yes	Power Supply	85 - 264VAC , 47 - 63Hz , 600 W
Number of Programs	1000 + USB FLASH + intuitive "drag and drop" program creation.	Warranty	1 Year
End of program alarm	Yes(can be disabled)		
Max. No. of Step	30		
Max. No. of Cycle of each step	99		
Time Increment/Decrement	1 Sec. -9 Min. 59 Sec.		
Temp. Increment/Decrement	0.1 - 9.9°C		