

# Your OMNI Homogenisation Solutions Partner

## OMNI ROTOR-STATOR HOMOGENISERS



### TH

- 220W. Up to 35,000rpm
- 100µl–100ml sample volume
- 5, 7, 10mm Stainless Steel Generator Probes + 7mm/12mm OMNI Tips™



### THQ

- 40W. Up to 32,000rpm (variable digital)
- <200µl–120ml sample volume
- 5, 7, 10mm Stainless Steel Generator Probes + 7mm/12mm OMNI Tips™



### TM

- 125W. 5,000 - 35,000rpm
- 5mm Probe (<200µL - 5ml), 7mm Probe (250µL - 30ml) sample volume
- 5, 7, 10mm Stainless Steel Generator Probes



### GLH850

- 850W. 5,000 to 25,000rpm
- 7mm/12mm OMNI Tips™ <200µl to 100ml sample volume
- 5, 7, 10mm Stainless Steel Generator Probes <200µl to 5L sample volume

## STAINLESS STEEL GENERATOR PROBES & OMNI TIPS™



**Generator Probe**  
5mm size; 0.2–5ml volume range



**Generator Probe**  
7mm size; 0.25ml–30ml volume range



**Generator Probe**  
10mm size; 1.5–100ml volume range



**Generator Probe**  
20mm size; 50ml–2L volume range



**Generator Probe**  
30mm size; 0.75ml–10L volume range



**OMNI Tips™ (Single Use)**  
7mm Hard Tissue; >250µl–30ml volume range



**OMNI Tips™ (Single Use)**  
7mm Soft Tissue; >250µl–30ml volume range



**OMNI Tips™ (Single Use)**  
7mm Hybrid Probe (Outer Stainless Steel+Plastic Inner Shaft); 250µl–40ml volume range



**OMNI Tips™ (Single Use)**  
12mm Hard Tissue; >250µl-application specific max volume

## OMNI HOMOGENISER MIXER / MACRO

### MIXER

- 600W. 500–18,000rpm
- 0.25ml–10L sample volume
- Stainless Steel Generator Probes (10, 20, 30mm)
- Blade Assemblies 1" (25.4mm) and 2" (50.8mm) in sealed chambers



### MACRO

- 1800W. 1,000–20,000rpm
- 0.25ml–30L sample volume
- Stainless Steel Generator Probes (10, 20, 30, 45, 55mm)
- Blade Assemblies 1" (25.4mm) and 2" (50.8mm) in sealed chambers



### MACRO-ES

- 1800W. 1,000–20,000rpm
- 250µl–30L sample volume
- Stainless Steel Generator Probes (10, 20, 30, 45, 55mm)
- 12 programs (incl. speed, run time & ramp) + sealed chambers + blade assemblies



## MIXER / MACRO ACCESSORIES



10, 20, 30, 45, 55mm Stainless Steel Generator Probes



Glass, Stainless Steel, Plastic Sealed Chambers

# OMNI Bead Mill Homogenisers & Tubes

## OMNI BEAD MILL HOMOGENISERS



		Bead Ruptor™ 4	Bead Ruptor™ 12	Bead Ruptor™ 24	Bead Ruptor™ Elite	Bead Ruptor™ 96+
Tube Size	0.5-2ml	●			●	●
	2ml			●		
	2ml or 7ml	●	●		●	
	2-50ml				●	
	50ml				●	●
Milling jar/plate	Milling Jar or SBS/96 Well Plate					●
Sample throughput/week	<50	●	●	●	●	●
	50 to 400			●	●	●



## OMNI BEAD RUPTOR™ CRYO COOLING UNIT

- Compatible with Bead Ruptor™ Elite. Maintains 4 °C to ambient sample temperatures
- Adjustable cooling rate. LN2 or dry ice with ethanol
- Preserves RNA integrity & minimises enzymatic degradation

## OMNI PRE-FILLED TUBES

0.5ml, 1.5ml, 2ml, 7ml, 15ml, 30ml & 50mls optimised to withstand high impact forces



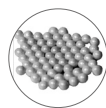
## Choose Your OMNI Bead Mill Tube Size by Sample Volume

Tube Size	20µl	100µl	1ml	2ml	5ml	7ml	15ml	30ml	50ml
0.5ml	20-300µl								
1.5ml		200µl-1.5ml							
2ml	20-800µl								
7ml			1-3ml						
15ml				2-10ml					
30ml					5-20ml				
50ml					5-35ml				



Need help choosing the right OMNI Bead Mill Homogeniser? **Talk to us now**

# CHOOSE YOUR OMNI PRE-FILLED BEAD MILL TUBE



Ceramic



Garnet



Glass



Metal

Bead Media	Tube Size	Bead Size	Description	Quantity	Code	BR4	BR12	BR24	BR Elite	DNase/Rnase Free	Microbial DNA Free
Ceramic	0.5ml	0.25mm	RNA Extraction & Soil	50	19-625	Yes	Yes	Yes	Yes	Yes	No
Ceramic	0.5ml	1.4mm	Soft Tissue	50	19-626	Yes	Yes	Yes	Yes	Yes	No
Ceramic	0.5ml	1.4mm	Soft Tissue	50	19-626D	Yes	Yes	Yes	Yes	Yes	Yes
Ceramic	1.5ml	1.4mm	Soft Tissue	50	19-617	Yes	No	No	Yes	Yes	No
Ceramic	1.5ml	1.4mm	Soft Tissue	50	19-617D	Yes	No	No	Yes	Yes	Yes
Ceramic	1.5ml	2.8 mm	Hard Tissue	50	19-618	Yes	No	No	Yes	Yes	No
Ceramic	1.5ml	2.8 mm	Hard Tissue	50	19-618D	Yes	No	No	Yes	Yes	Yes
Ceramic	2ml	0.1 mm	Universal Microbial	50	19-632	Yes	Yes	Yes	Yes	Yes	No
Ceramic	2ml	0.1 mm	Universal Microbial	50	19-632D	Yes	Yes	Yes	Yes	Yes	Yes
Ceramic	2ml	0.1 mm	Homogenising Mix	50	19-634	Yes	Yes	Yes	Yes	Yes	No
Ceramic	2ml	0.1 mm	Homogenising Mix	50	19-683D	Yes	Yes	Yes	Yes	Yes	Yes
Ceramic	2ml	0.1mm & 2.8mm	Microbiome	50	19-636D	Yes	Yes	Yes	Yes	Yes	Yes
Ceramic	2ml	0.5 mm	Universal Microbial	50	19-631	Yes	Yes	Yes	Yes	Yes	No
Ceramic	2ml	0.5 mm	Universal Microbial	50	19-631D	Yes	Yes	Yes	Yes	Yes	Yes
Ceramic	2ml	1.4 mm	Soft Tissue	50	19-627	Yes	Yes	Yes	Yes	Yes	No
Ceramic	2ml	1.4 mm	Soft Tissue	50	19-627D	Yes	Yes	Yes	Yes	Yes	Yes
Ceramic	2ml	1.4mm & 2.8mm	Homogenising Mix	50	19-629	Yes	Yes	Yes	Yes	Yes	No
Ceramic	2ml	2.8mm	Hard Tissue	50	19-628	Yes	Yes	Yes	Yes	Yes	No
Ceramic	2ml	2.8mm	Hard Tissue	50	19-628D	Yes	Yes	Yes	Yes	Yes	Yes
Ceramic	7ml	1.4mm	Soft Tissue	50	19-677	Yes	Yes	No	Yes	No	No
Ceramic	7ml	2.8mm	Hard Tissue	50	19-678	Yes	Yes	No	Yes	Yes	No
Ceramic	7ml	2.8mm	Hard Tissue	50	19-678D	Yes	Yes	No	Yes	Yes	Yes
Ceramic	15ml	2.8mm	Hard Tissue	50	19-6158	No	No	No	Yes	No	No
Ceramic	30ml	1.4mm	Soft Tissue	50	19-6357	No	No	No	Yes	No	No
Ceramic	30ml	1.4mm	Soft Tissue	50	19-6357Z	No	No	No	Yes	No	No
Ceramic	30ml	2.8mm	Hard Tissue	50	19-6358	No	No	No	Yes	Yes	No
Ceramic	30ml	2.8mm	Hard Tissue	50	19-6358D	No	No	No	Yes	Yes	Yes
Ceramic	30ml	2.8mm	Hard Tissue	50	19-6358Z	No	No	No	Yes	No	No
Ceramic	50ml	2.8mm	Hard Tissue	50	19-6508	No	No	No	Yes	No	No
Garnet	0.5ml	0.15mm	Microorganism	50	19-623	Yes	Yes	Yes	Yes	Yes	No
Garnet	2ml	0.7mm	Hard & Fibrous Tissue	50	19-624	Yes	Yes	Yes	Yes	Yes	No
Garnet	7ml	0.7mm	Homogenising Mix	50	19-674	Yes	Yes	No	Yes	No	No
Glass	0.5ml	0.1mm & 0.5mm	Homogenising Mix	50	19-630D	Yes	Yes	Yes	Yes	Yes	Yes
Glass	2ml	0.1mm	Microorganism	50	19-621	Yes	Yes	Yes	Yes	Yes	No
Glass	2ml	0.5mm	Tough Microorganism	50	19-622	Yes	Yes	Yes	Yes	Yes	No
Glass	2ml	0.5mm	Tough Microorganism	50	19-622D	Yes	Yes	Yes	Yes	Yes	Yes
Glass	7ml	0.5mm	Homogenising Mix	50	19-672	Yes	Yes	No	Yes	No	No
Metal	1.5ml	2.4mm	Hard Tissue	50	19-610	Yes	No	No	Yes	Yes	No
Metal	2ml	2.4mm	Hard Tissue	50	19-620	Yes	Yes	Yes	Yes	Yes	No
Metal	2ml	2.4mm	Hard Tissue	50	19-620D	Yes	Yes	Yes	Yes	Yes	Yes
Metal	7ml	2.4mm	Hard Tissue	50	19-670	Yes	Yes	No	Yes	No	No
Metal	30ml	2.4mm	Hard Tissue	50	19-6350	No	No	No	Yes	No	No
Metal	30ml	2.4mm	Hard Tissue	50	19-6350Z	No	No	No	Yes	No	No

# OMNI Automation, Sonification & Centrifugation

## OMNI LH 96 AUTOMATED HOMOGENISER

- Fully Automated Workflow - Weigh, Dilute, Homogenise & Reformat
- Scale up while consolidating multiple sample prep steps in one unit
- Reproducible results. Reduced time from tube to plate.  
Maximum versatility. Labour savings.

**BOOK A  
WORKFLOW  
CONSULTATION**

Feature	Details
Throughput	>400 samples/week
Speed	500–28,000rpm
Sample Volume	250µl–40ml (2–50ml tubes)
Probe Compatibility	5mm, 7mm, 12mm OMNI Tips™ (up to 8 OMNI Tips™)
Interface	Intuitive touchscreen, custom processing profiles
Weigh Module	Tube transfer gripper, dilution, balance sensitivity 0.0001g, reformat up to 96 samples
Temperature Module	Optional active or passive cooling



## OMNI SONICATORS

Ultrasonic Probe options from 1.6–5.4mm



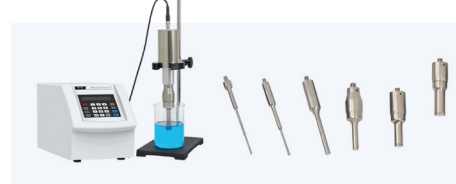
### OM50

- 50W, 20kHz Frequency
- Up to 50ml sample volume
- Thumb-switch or continuous operation
- 3 Ultrasonic probe options



### OM100

- 100W, 20kHz Frequency
- 200µl–1L sample volume
- Programmable up to 10hrs & pulse mode
- 3 Ultrasonic probe options



### OM500

- 500W, 20kHz Frequency
- 200µl–1L sample volume
- Programmable up to 10hrs & pulse mode
- 6 Ultrasonic probe options

## OMNI CENTRIFUGES

Deep-Well Plate & Multi-Tube Rotors



### CF-220

- Compact
- 15,500rpm / 23,100g
- 7 fixed angle rotor options



### CF-260

- Powerful
- 18,000rpm / 31,150g
- 10 rotor options



### CF-350

- Versatile
- 15,000rpm / 21,630g
- 13 rotor options



☎ 02 9575 7512  
✉ sales@capellascience.com.au  
🌐 capellascience.com.au

**CONTACT US TO  
STREAMLINE YOUR  
SAMPLE PREP  
PROCESS**

